

Inspired Packaging Solutions for Every Application

CATALOGUE



Table of Contents

FOIL CONTAINERS AND LIDS	2
OBLONG CONTAINERS	2
OBLONG LIDS	4
ROUND CONTAINERS	6
ROUND LIDS	9
STEAM PANS	13
STEAM LIDS	18
CATERWARE	19
LAZY SUSAN	19
TRAY	20
DOME LID	21
BAKERY	22
MISCELLANEOUS BAKERY	22
PIE	23
MISCELLANEOUS CONTAINERS	26
ROASTER	26
PIZZA	27
SMOOTH WALL	28
FOIL CUTTERBOXES	29
ALL PURPOSE	29
HEAVY DUTY	30
STANDARD	31
SLIDE CUT / NO BLADE	32
FOIL SHEETS	33
INSULATED FOIL SHEETS	33
POP-UP SHEETS	34
PVC FILM	36
WP PVC CUTTERBOXES	36
CUTTERBOXES WITH BLADE	36
SLIDE CUT / NO BLADE	38
PVC REFILL ROLLS	39
EASY TEAR PVC	40
MEAT FILM	42
HAND FILM	42
MACHINE FILM	43
MACHINE FILM HD	44
PRODUCE FILM	45
PROCESSOR FILM	46
MUSHROOM FILM	47
WRAPMASTER	48
WRAPMASTER DISPENSER	48
WRAPMASTER FOIL REFILL ROLLS	49
WRAPMASTER PVC REFILL ROLLS	50

FOIL CONTAINERS AND LIDS

OBLONG CONTAINERS



1 lb Oblong Container

Item Number/UPC	5705	047552513343
Rim Style	IC	
Pairs With	5705L, 5705DL, 5705DLHD	
Top Out	150 x 120 mm	5 7/8 x 4 3/4 in
Top In	130 x 100 mm	5 1/8 x 3 7/8 in
Bottom	110 x 85 mm	4 3/8 x 3 1/4 in
Vertical Depth	40 mm	1 9/16 in
Slant Depth	42 mm	1 5/8 in
Capacity	450 mL	15.8 fl oz
Shipping Weight	8.2 kg	18 lb
Case Dimensions	315 x 645 x 260 mm	12 1/2 x 25 1/2 x 10 1/4 in
Pack Factor	1000 / Case	
Pallet Configuration	9 x 3 = 27	



1.5 lb Oblong Shallow Container

Item Number/UPC	5708	047552594854
Rim Style	IC	
Pairs With	588DL, 5708L	
Top Out	220 x 155 mm	8 5/8 x 6 1/8 in
Top In	205 x 135 mm	8 x 5 3/8 in
Bottom	188 x 125 mm	7 3/8 x 4 7/8 in
Vertical Depth	30 mm	1 3/16 in
Slant Depth	32 mm	1 1/4 in
Capacity	800 mL	28.2 fl oz
Shipping Weight	6.3 kg	13.8 lb
Case Dimensions	375 x 455 x 305 mm	14 3/4 x 18 x 12 in
Pack Factor	500 / Case	
Pallet Configuration	7 x 5 = 35	



2.25 lb Oblong Container

Item Number/UPC	588B	047552358890
Rim Style	IC	
Pairs With	588DL, 5708L	
Top Out	225 x 160 mm	8 3/4 x 6 1/4 in
Top In	200 x 140 mm	8 x 5 1/2 in
Bottom	180 x 115 mm	7 x 4 1/2 in
Vertical Depth	44 mm	1 3/4 in
Slant Depth	46 mm	1 13/16 in
Capacity	1050 mL	37 fl oz
Shipping Weight	7.5 kg	16.5 lb
Case Dimensions	375 x 465 x 330 mm	14 3/4 x 18 x 13 in
Pack Factor	500 / Case	
Pallet Configuration	6 x 6 = 36	



**2.25 lb Oblong Container
Heavy Duty**

Item Number/UPC	588BHD	047552544830
Rim Style	IC	
Pairs With	588DL, 5708L	
Top Out	225 x 160 mm	8 3/4 x 6 1/4 in
Top In	200 x 140 mm	8 x 5 1/2 in
Bottom	180 x 115 mm	7 x 4 1/2 in
Vertical Depth	44 mm	1 3/4 in
Slant Depth	46 mm	1 13/16 in
Capacity	1050 mL	37 fl oz
Shipping Weight	8.3 kg	18.3 lb
Case Dimensions	375 x 465 x 330 mm	14 3/4 x 18 x 13 in
Pack Factor	500 / Case	
Pallet Configuration	6 x 5 = 30	



**3 Compartment Oblong
Container+Lid**

Item Number/UPC	5139-L250	047552518065
Rim Style	IC	
Top Out	230 x 180 mm	9 x 7 1/8 in
Top In	215 x 165 mm	8 1/2 x 6 1/2 in
Bottom	195 x 145 mm	7 5/8 x 5 3/4 in
Vertical Depth	38 mm	1 1/2 in
Slant Depth	39 mm	1 9/16 in
Capacity	700 mL	24.6 fl oz
Shipping Weight	7 kg	15.5 lb
Case Dimensions	345 x 450 x 235 mm	13 1/2 x 17 3/4 x 9 1/4 in
Pack Factor	250 / Case	
Pallet Configuration	6 x 6 = 36	



4 lb Oblong Container

Item Number/UPC	5902	047552512759
Rim Style	IC	
Pairs With	5902L, 5902DL	
Top Out	315 x 215 mm	12 1/8 x 8 1/2 in
Top In	295 x 193 mm	11 1/2 x 7 5/8 in
Bottom	275 x 175 mm	10 3/4 x 6 7/8 in
Vertical Depth	44 mm	1 3/4 in
Slant Depth	46 mm	1 13/16 in
Capacity	2300 mL	80.9 fl oz
Shipping Weight	9.3 kg	20.7 lb
Case Dimensions	230 x 715 x 330 mm	9 x 28 1/4 x 13 in
Pack Factor	250 / Case	
Pallet Configuration	6 x 5 = 30	

OBLONG LIDS

1 lb Oblong Dome Lid

Item Number/UPC	5705DL	047552513640
Pairs With	5705	
Top Out	135 x 115 mm	5 3/8 x 4 1/2 in
Top In	115 x 90 mm	4 5/8 x 3 1/2 in
Vertical Depth	15 mm	9/16 in
Slant Depth	18 mm	11/16 in
Shipping Weight	3.3 kg	7.4 lb
Case Dimensions	200 x 290 x 245 mm	7 3/4 x 11 1/2 x 9 3/4 in
Pack Factor	1000 / Case	
Pallet Configuration	12 x 5 = 60	

1 lb Oblong Dome Lid Heavy Duty

Item Number/UPC	5705DLHD	047552518744
Pairs With	5705	
Top Out	140 x 115 mm	5 1/2 x 4 1/2 in
Top In	115 x 90 mm	4 5/8 x 3 1/2 in
Vertical Depth	15 mm	9/16 in
Slant Depth	18 mm	11/16 in
Shipping Weight	2.4 kg	5.3 lb
Case Dimensions	145 x 290 x 170 mm	5 3/4 x 11 1/2 x 6 3/4 in
Pack Factor	500 / Case	
Pallet Configuration	10 x 7 = 70	

1.5/2.25 lb Oblong Dome Lid

Item Number/UPC	588DL	047552358876
Pairs With	5708, 588B, 588BHD	
Top Out	210 x 150 mm	8 3/8 x 5 7/8 in
Top In	190 x 130 mm	7 1/2 x 5 in
Vertical Depth	17 mm	11/16 in
Slant Depth	19 mm	3/4 in
Shipping Weight	3.6 kg	8 lb
Case Dimensions	305 x 315 x 225 mm	12 x 12 1/2 x 8 3/4 in
Pack Factor	500 / Case	
Pallet Configuration	16 x 5 = 80	

1 lb Oblong Laminated Foil Lid

Item Number/UPC	5705L	047552513602
Pairs With	5705	
Top Out	140 x 120 mm	5 1/2 x 4 5/8 in
Shipping Weight	5.8 kg	12.7 lb
Case Dimensions	155 x 240 x 240 mm	6 x 9 1/2 x 9 1/2 in
Pack Factor	1000 / Case	
Pallet Configuration	30 x 5 = 150	



1.5/2.25 lb Oblong Laminated Foil Lid

Item Number/UPC	5708L	047552513022
Pairs With	5708, 588B, 588BHD	
Top Out	215 x 150 mm	8 1/2 x 5 7/8 in
Shipping Weight	5.7 kg	12.5 lb
Case Dimensions	160 x 220 x 245 mm	6 1/4 x 8 3/4 x 9 3/4 in
Pack Factor	500 / Case	
Pallet Configuration	30 x 5 = 150	



4 lb Oblong Dome Lid

Item Number/UPC	5902DL	047552513046
Pairs With	5902	
Top Out	305 x 205 mm	12 x 8 1/8 in
Top In	290 x 185 mm	11 3/8 x 7 1/4 in
Vertical Depth	20 mm	13/16 in
Slant Depth	22 mm	7/8 in
Shipping Weight	4.2 kg	9.3 lb
Case Dimensions	215 x 420 x 315 mm	8 1/2 x 16 1/2 x 12 1/2 in
Pack Factor	250 / Case	
Pallet Configuration	14 x 4 = 56	



4 lb Oblong Lid Laminated Foil Lid

Item Number/UPC	5902L	047552513824
Pairs With	5902	
Top Out	305 x 205 mm	12 x 8 1/8 in
Shipping Weight	5.9 kg	12.9 lb
Case Dimensions	215 x 315 x 115 mm	8 1/2 x 12 1/2 x 4 1/2 in
Pack Factor	250 / Case	
Pallet Configuration	13 x 8 = 104	

ROUND CONTAINERS

5" Round Container Low Profile



Item Number/UPC	505B	047552594885
Rim Style	HE	
Pairs With	505DL	
Top Out	125 mm	4 7/8 in
Top In	115 mm	4 1/2 in
Bottom	100 mm	3 7/8 in
Vertical Depth	29 mm	1 1/8 in
Slant Depth	31 mm	1 1/4 in
Capacity	300 mL	10.6 fl oz
Shipping Weight	6.5 kg	14.2 lb
Case Dimensions	395 x 515 x 265mm	15 1/2 x 20 1/4 x 10 1/2 in
Pack Factor	1000 / Case	
Pallet Configuration	6 x 7 = 42	

7" Round Container



Item Number/UPC	527BWP	047552357503
Rim Style	HE	
Pairs With	527L, 527LPM, 527DL, 527DLHD	
Top Out	185 mm	7 1/4 in
Top In	160 mm	6 3/8 in
Bottom	140 mm	5 5/8 in
Vertical Depth	35 mm	1 3/8 in
Slant Depth	39 mm	1 9/16 in
Capacity	700 mL	24.6 fl oz
Shipping Weight	5 kg	11 lb
Case Dimensions	390 x 380 x 420 mm	15 1/4 x 15 x 16 1/2 in
Pack Factor	500 / Case	
Pallet Configuration	6 x 5 = 30	

7" Round Container Heavy Duty



Item Number/UPC	527HD	047552518133
Rim Style	HE	
Pairs With	527L, 527LPM, 527DL, 527DLHD	
Top Out	185 mm	7 1/4 in
Top In	160 mm	6 3/8 in
Bottom	140 mm	5 5/8 in
Vertical Depth	35 mm	1 3/8 in
Slant Depth	39 mm	1 9/16 in
Capacity	700 mL	24.6 fl oz
Shipping Weight	5.7 kg	12.7 lb
Case Dimensions	390 x 390 x 420 mm	15 1/4 x 15 1/4 x 16 1/2 in
Pack Factor	500 / Case	
Pallet Configuration	6 x 5 = 30	



7" Round Container Prestige

Item Number/UPC	527BP	047552511714
Rim Style	HE	
Pairs With	527L, 527LPM, 527DL, 527DLHD	
Top Out	185 mm	7 1/4 in
Top In	160 mm	6 3/8 in
Bottom	140 mm	5 5/8 in
Vertical Depth	35 mm	1 3/8 in
Slant Depth	39 mm	1 9/16 in
Capacity	700 mL	24.6 fl oz
Shipping Weight	4.3 kg	9.6 lb
Case Dimensions	390 x 390 x 420 mm	15 1/4 x 15 1/4 x 16 1/2 in
Pack Factor	500 / Case	
Pallet Configuration	6 x 5 = 30	



8" Round Container

Item Number/UPC	508B	047552358500
Rim Style	HE	
Pairs With	508L, 508LPM, 508DL, 508DLHD	
Top Out	220 mm	8 5/8 in
Top In	200 mm	7 7/8 in
Bottom	180 mm	7 1/8 in
Vertical Depth	38 mm	1 1/2 in
Slant Depth	40 mm	1 9/16 in
Capacity	1100 mL	38.7 fl oz
Shipping Weight	7.1 kg	15.7 lb
Case Dimensions	440 x 440 x 430 mm	17 1/4 x 17 1/4 x 17 in
Pack Factor	500 / Case	
Pallet Configuration	4 x 5 = 20	



9" Round Container

Item Number/UPC	509B	047552359507
Rim Style	HE	
Pairs With	509L, 509LPM, 509DL, 509DLHD	
Top Out	235 mm	9 1/4 in
Top In	215 mm	8 1/2 in
Bottom	200 mm	7 3/4 in
Vertical Depth	49 mm	1 15/16 in
Slant Depth	42 mm	1 5/8 in
Capacity	1450 mL	51 fl oz
Shipping Weight	8.7 kg	19.2 lb
Case Dimensions	485 x 480 x 430 mm	19 x 19 x 17 in
Pack Factor	500 / Case	
Pallet Configuration	4 x 5 = 20	



9" Round Container Prestige

Item Number/UPC	509BP	047552357503
Rim Style	HE	
Pairs With	509L, 509LPM, 509DL, 509DLHD	
Top Out	235 mm	9 1/4 in
Top In	215 mm	8 1/2 in
Bottom	200 mm	7 3/4 in
Vertical Depth	40 mm	1 9/16 in
Slant Depth	42 mm	1 5/8 in
Capacity	1450 mL	51 fl oz
Shipping Weight	8 kg	17.6 lb
Case Dimensions	485 x 480 x 430 mm	19 x 19 x 17 in
Pack Factor	500 / Case	
Pallet Configuration	4 x 5 = 20	

ROUND LIDS

5" Round Dome Lid



Item Number/UPC	505DL	047552594892
Pairs With	505B	
Top Out	120 mm	4 3/4 in
Top In	105 mm	4 1/8 in
Vertical Depth	19 mm	3/4 in
Slant Depth	21 mm	13/16 in
Shipping Weight	3.6 kg	8 lb
Case Dimensions	260 x 260 x 250 mm	10 1/4 x 10 1/4 x 9 3/4 in
Pack Factor	1000 / Case	
Pallet Configuration	16 x 7 = 112	

7" Round Dome Lid



Item Number/UPC	527DL	047552355371
Pairs With	527BP, 527BWP, 527HD	
Top Out	180 mm	7 1/8 in
Top In	160 mm	6 1/4 in
Vertical Depth	18 mm	11/16 in
Slant Depth	22 mm	7/8 in
Shipping Weight	2.6 kg	5.6 lb
Case Dimensions	245 x 365 x 190 mm	9 3/4 x 14 1/4 x 7 1/2 in
Pack Factor	500 / Case	
Pallet Configuration	18 x 5 = 90	

7" Round Dome Lid Heavy Duty



Item Number/UPC	527DLHD	047552518737
Pairs With	527BP, 527BWP, 527HD	
Top Out	180 mm	7 1/8 in
Top In	160 mm	6 1/4 in
Vertical Depth	23 mm	7/8 in
Slant Depth	25 mm	1 in
Shipping Weight	4.6 kg	10.1 lb
Case Dimensions	185 x 420 x 370 mm	7 1/4 x 16 1/2 x 14 1/2 in
Pack Factor	500 / Case	
Pallet Configuration	14 x 5 = 70	

7" Round Laminated Foil Lid



Item Number/UPC	527L	047552357275
Pairs With	527BP, 527BWP, 527HD	
Top Out	180 mm	7 1/8 in
Shipping Weight	4.8 kg	10.5 lb
Case Dimensions	190 x 190 x 235 mm	7 1/2 x 7 1/2 x 9 1/4 in
Pack Factor	500 / Case	
Pallet Configuration	30 x 5 = 150	



**7" Round Laminated Foil Lid
Heavy Duty**

Item Number/UPC	527LPM	047552594984
Pairs With	527BP, 527BWP, 527HD	
Top Out	180 mm	7 1/8 in
Shipping Weight	6.7 kg	14.7 lb
Case Dimensions	190 x 190 x 235 mm	7 1/2 x 7 1/2 x 9 1/4 in
Pack Factor	500 / Case	
Pallet Configuration		



8" Round Dome Lid

Item Number/UPC	508DL	047552358562
Pairs With	508B	
Top Out	210 mm	8 1/4 in
Top In	190 mm	7 1/2 in
Vertical Depth	20 mm	13/16 in
Slant Depth	23 mm	7/8 in
Shipping Weight	3.7 kg	8.2 lb
Case Dimensions	220 x 360 x 220 mm	8 3/4 x 14 1/4 x 8 3/4 in
Pack Factor	500 / Case	
Pallet Configuration	15 x 7 = 105	



**8" Round Dome Lid Heavy
Duty**

Item Number/UPC	508DLHD	047552594861
Pairs With	508B	
Top Out	210 mm	8 1/4 in
Top In	190 mm	7 1/2 in
Vertical Depth	15 mm	9/16 in
Slant Depth	18 mm	11/16 in
Shipping Weight	6 kg	13.2 lb
Case Dimensions	215 x 390 x 430 mm	8 1/2 x 15 1/4 x 17 in
Pack Factor	500 / Case	
Pallet Configuration	13 x 5 = 65	



8" Round Laminated Foil Lid

Item Number/UPC	508L	047552358555
Pairs With	508B	
Top Out	210 mm	8 1/4 in
Shipping Weight	6.5 kg	14.4 lb
Case Dimensions	320 x 450 x 325 mm	12 1/2 x 17 3/4 x 12 3/4 in
Pack Factor	500 / Case	
Pallet Configuration	20 x 5 = 100	



**8" Round Laminated Foil Lid
Heavy Duty**

Item Number/UPC	508LPM	047552518485
Pairs With	508B	
Top Out	210 mm	8 1/4 in
Shipping Weight	12.1 kg	26.6 lb
Case Dimensions	320 x 450 x 325 mm	12 1/2 x 17 3/4 x 12 3/4 in
Pack Factor	500 / Case	
Pallet Configuration		



9" Round Dome Lid

Item Number/UPC	509DL	047552355097
Pairs With	509B, 509BP	
Top Out	225 mm	8 7/8 in
Top In	205 mm	8 1/8 in
Vertical Depth	20 mm	13/16 in
Slant Depth	23 mm	7/8 in
Shipping Weight	4.1 kg	9.1 lb
Case Dimensions	235 x 310 x 235 mm	9 1/4 x 12 1/4 x 9 1/4 in
Pack Factor	500 / Case	
Pallet Configuration	18 x 5 = 90	



**9" Round Dome Lid Heavy
Duty**

Item Number/UPC	509DLHD	047552594878
Pairs With	509B, 509BP	
Top Out	225 mm	8 7/8 in
Top In	205 mm	8 1/8 in
Vertical Depth	20 mm	13/16 in
Slant Depth	23 mm	7/8 in
Shipping Weight	7 kg	15.3 lb
Case Dimensions	240 x 330 x 485 mm	9 1/2 x 13 x 19 in
Pack Factor	500 / Case	
Pallet Configuration	15 x 4 = 60	



9" Round Laminated Foil Lid

Item Number/UPC	509L	047552359279
Pairs With	509B, 509BP	
Top Out	225 mm	8 7/8 in
Shipping Weight	7.6 kg	16.7 lb
Case Dimensions	235 x 235 x 230 mm	9 1/4 x 9 1/4 x 9 in
Pack Factor	500 / Case	
Pallet Configuration	20 x 5 = 100	



**9" Round Laminated Foil Lid
Heavy Duty**

Item Number/UPC	509LPM	047552518492
Pairs With	509B, 509BP	
Top Out	225 mm	8 7/8 in
Shipping Weight	12.6 kg	27.8 lb
Case Dimensions	235 x 240 x 390 mm	9 1/4 x 9 1/2 x 15 1/4 in
Pack Factor	500 / Case	
Pallet Configuration		

STEAM PANS

1/3 Steam Pan Deep Aluminum



Item Number/UPC	5162	047552351624
Rim Style	FC	
Pairs With	5006	
Top Out	320 x 168 mm	12 5/8 x 10 5/8 in
Top In	295 x 143 mm	11 5/8 x 5 5/8
Bottom	265 x 112 mm	10 7/16 x 4 7/15
Vertical Depth	78 mm	3 1/16 in
Slant Depth	85 mm	3 3/8 in
Capacity	2840 mL	96 fl oz
Shipping Weight	4.1 kg	9.0 lb
Case Dimensions	33 x 42.5 x 18.5 mm	13 x 16 3/4 x 7 1/4 in
Pack Factor	100 / case	
Pallet Configuration	9 x 10 = 90	

Full Steam Pan Deep



Item Number/UPC	5130	047552351303
Rim Style	FC	
Pairs With	5000, 5000DL	
Top Out	520 x 325 mm	20 3/4 x 12 3/4 in
Top In	495 x 295 mm	19 1/2 x 11 5/8 in
Bottom	455 x 255 mm	17 7/8 x 10 in
Vertical Depth	75 mm	2 15/16 in
Slant Depth	82 mm	3 1/4 in
Capacity	9000 mL	316.8 fl oz
Shipping Weight	6.5 kg	14.3 lb
Case Dimensions	340 x 530 x 335 mm	13 1/2 x 20 3/4 x 13 1/4 in
Pack Factor	50 / Case	
Pallet Configuration	5 x 5 = 25	

Full Steam Pan Deep Prestige



Item Number/UPC	5130P	047552350207
Rim Style	FC	
Pairs With	5000, 5000DL	
Top Out	520 x 325 mm	20 3/4 x 12 7/8 in
Top In	495 x 295 mm	19 1/2 x 11 5/8 in
Bottom	395 x 270 mm	15 5/8 x 10 3/4 in
Vertical Depth	77 mm	3 1/16 in
Slant Depth	85 mm	3 3/8 in
Capacity	9000 mL	316.8 fl oz
Shipping Weight	5.9 kg	13.1 lb
Case Dimensions	340 x 530 x 335 mm	13 1/2 x 20 3/4 x 13 1/4 in
Pack Factor	50 / Case	
Pallet Configuration	5 x 5 = 25	



Full Steam Pan Deep Prestige

Item Number/UPC	5130ES	047552594922
Rim Style	FC	
Pairs With	5000, 5000DL	
Top Out	530 x 330 mm	20 1/2 x 12 3/8 in
Top In	495 x 295 mm	19 1/8 x 11 3/8 in
Bottom	455 x 255 mm	17 5/8 x 9 7/8 in
Vertical Depth	75 mm	2 7/8 in
Slant Depth	80 mm	3 1/8 in
Capacity	9500 mL	335 fl oz
Shipping Weight	7 kg	15.4 lb
Case Dimensions	335 x 545 x 350 mm	13 1/4 x 21 1/2 x 13 3/4 in
Pack Factor	50 / Case	
Pallet Configuration	6 x 5 = 30	



Full Steam Pan Medium

Item Number/UPC	5120	047552351204
Rim Style	FC	
Pairs With	5000, 5000DL	
Top Out	520 x 325 mm	20 3/4 x 12 3/4 in
Top In	495 x 295 mm	19 1/2 x 11 5/8 in
Bottom	465 x 265 mm	18 1/4 x 10 3/8 in
Vertical Depth	55 mm	2 3/16 in
Slant Depth	83 mm	3 1/4 in
Capacity	6500 mL	228.8 fl oz
Shipping Weight	6 kg	13.2 lb
Case Dimensions	310 x 535 x 335 mm	12 1/4 x 21 x 13 1/4 in
Pack Factor	50 / Case	
Pallet Configuration	6 x 5 = 30	



Full Steam Pan Shallow

Item Number/UPC	5110	047552351105
Rim Style	FC	
Pairs With	5000, 5000DL	
Top Out	520 x 325 mm	20 3/4 x 12 3/4 in
Top In	495 x 295 mm	19 1/2 x 11 5/8 in
Bottom	460 x 265 mm	18 1/8 x 10 3/8 in
Vertical Depth	43 mm	1 11/16 in
Slant Depth	54 mm	2 1/8 in
Capacity	4250 mL	149.6 fl oz
Shipping Weight	5.3 kg	11.6 lb
Case Dimensions	280 x 530 x 335 mm	11 x 20 3/4 x 13 1/4 in
Pack Factor	50 / Case	
Pallet Configuration	6 x 5 = 30	



Full Steam Pan Shallow

Item Number/UPC	5132ES	047552594946
Rim Style	FC	
Pairs With	5001, 5001DL	
Top Out	325 x 265 mm	12 5/8 x 10 1/4 in
Top In	295 x 230 mm	11 3/8 x 8 7/8 in
Bottom	260 x 200 mm	10 1/8 x 7 3/4 in
Vertical Depth	57 mm	2 1/4 in
Slant Depth	62 mm	2 3/8 in
Capacity	3250 mL	115 fl oz
Shipping Weight	4.9 kg	10.7 lb
Case Dimensions	340 x 495 x 290 mm	13 1/2 x 19 1/2 x 11 1/2 in
Pack Factor	100 / Case	
Pallet Configuration	7 x 6 = 42	



Half Steam Pan Deep

Item Number/UPC	5132	047552351327
Rim Style	FC	
Pairs With	5001, 5001DL	
Top Out	325 x 265 mm	12 3/4 x 10 3/8 in
Top In	300 x 240 mm	11 3/4 x 9 3/8 in
Bottom	275 x 215 mm	10 7/8 x 8 1/2 in
Vertical Depth	58 mm	2 5/16 in
Slant Depth	60 mm	2 3/8 in
Capacity	3500 mL	123.2 fl oz
Shipping Weight	4.5 kg	10 lb
Case Dimensions	270 x 450 x 330 mm	10 3/4 x 17 3/4 x 13 in
Pack Factor	100 / Case	
Pallet Configuration	9 x 5 = 45	



Half Steam Pan Deep Heavy Duty

Item Number/UPC	5132HD	047552518263
Rim Style	FC	
Pairs With	5001, 5001DL	
Top Out	325 x 265 mm	12 3/4 x 10 3/8 in
Top In	300 x 240 mm	11 3/4 x 9 3/8 in
Bottom	275 x 215 mm	10 7/8 x 8 1/2 in
Vertical Depth	58 mm	2 5/16 in
Slant Depth	60 mm	2 3/8 in
Capacity	3500 mL	123.2 fl oz
Shipping Weight	4.9 kg	10.7 lb
Case Dimensions	270 x 450 x 330 mm	10 3/4 x 17 3/4 x 13 in
Pack Factor	100 / Case	
Pallet Configuration	9 x 5 = 45	



Half Steam Pan Deep Prestige

Item Number/UPC	5132P	047552595486
Rim Style	FC	
Pairs With	5001, 5001DL	
Top Out	325 x 265 mm	12 3/4 x 10 3/8 in
Top In	300 x 240 mm	11 3/4 x 9 3/8 in
Bottom	275 x 215 mm	10 7/8 x 8 1/2 in
Vertical Depth	58 mm	2 5/16 in
Slant Depth	60 mm	2 3/8 in
Capacity	3500 mL	123.2 fl oz
Shipping Weight	3.7 kg	8.2 lb
Case Dimensions	270 x 450 x 330 mm	10 3/4 x 17 3/4 x 13 in
Pack Factor	100 / Case	
Pallet Configuration	9 x 5 = 45	



Half Steam Pan Extra Deep

Item Number/UPC	5116	047552594847
Rim Style	FC	
Pairs With	5001, 5001DL	
Top Out	325 x 265 mm	12 3/4 x 10 3/8 in
Top In	300 x 240 mm	11 3/4 x 9 3/8 in
Bottom	275 x 215 mm	10 7/8 x 8 1/2 in
Vertical Depth	97 mm	3 13/16 in
Slant Depth	102 mm	4 in
Capacity	5250 mL	184.8 fl oz
Shipping Weight	6.3 kg	13.8 lb
Case Dimensions	270 x 450 x 420 mm	10 3/4 x 17 3/4 x 16 1/2 in
Pack Factor	100 / Case	
Pallet Configuration	6 x 5 = 30	



Half Steam Pan Medium

Item Number/UPC	5122	047552351228
Rim Style	FC	
Pairs With	5001, 5001DL	
Top Out	325 x 265 mm	12 3/4 x 10 3/8 in
Top In	300 x 240 mm	11 3/4 x 9 3/8 in
Bottom	275 x 215 mm	10 7/8 x 8 1/2 in
Vertical Depth	55 mm	2 3/16 in
Slant Depth	61 mm	2 3/8 in
Capacity	3250 mL	114.4 fl oz
Shipping Weight	4.3 kg	9.4 lb
Case Dimensions	270 x 450 x 330 mm	10 3/4 x 17 3/4 x 13 in
Pack Factor	100 / Case	
Pallet Configuration	10 x 5 = 50	



Half Steam Pan Shallow

Item Number/UPC	5112	047552351129
Rim Style	FC	
Pairs With	5001, 5001DL	
Top Out	325 x 265 mm	12 3/4 x 10 3/8 in
Top In	300 x 240 mm	11 3/4 x 9 3/8 in
Bottom	275 x 215 mm	10 7/8 x 8 1/2 in
Vertical Depth	38 mm	1 1/2 in
Slant Depth	40 mm	1 9/16 in
Capacity	2250 mL	79.2 fl oz
Shipping Weight	3.5 kg	7.8 lb
Case Dimensions	330 x 390 x 275 mm	13 x 15 1/4 x 10 3/4 in
Pack Factor	100 / Case	
Pallet Configuration	10 x 5 = 50	



1/4 Steam Pan

Item Number/UPC	5012	047552515200
Rim Style	FC	
Pairs With	5003	
Top Out	255 x 155 mm	10 x 6 1/8 in
Top In	235 x 135 mm	9 1/4 x 5 3/8 in
Bottom	205 x 110 mm	8 1/8 x 4 3/8 in
Vertical Depth	50 mm	1 15/16 in
Slant Depth	54 mm	2 1/8 in
Capacity	1250 mL	44 fl oz
Shipping Weight	5.4 kg	12 lb
Case Dimensions	70 x 330 x 560 mm	2 3/4 x 13 x 22 in
Pack Factor	250 / Case	
Pallet Configuration	8 x 6 = 48	

STEAM LIDS

1/3 Steam Lid Aluminum



Item Number/UPC	5006	047552350061
Rim Style	IC	
Pairs With	5162	
Top Out	323 x 170 mm	12 11/16 x 6 11/16 in
Slant Depth	7 mm	1 /4 in
Shipping Weight	1.8 kg	4.0 lb
Case Dimensions	19 x 34 x 21 mm	7 1/2 x 13 1/2 x 8 1/4 in
Pack Factor	100 / case	
Pallet Configuration	18 x 8 = 144	

Full Steam Foil Lid



Item Number/UPC	5000	047552350009
Pairs With	5110, 5120, 5130, 5130P	
Top Out	535 x 330 mm	21 5/8 x 13 in
Top In	510 x 310 mm	20 x 12 1/4 in
Shipping Weight	3.2 kg	7.2 lb
Case Dimensions	130 x 550 x 350 mm	5 x 21 3/4 x 13 3/4 in
Pack Factor	50 / Case	
Pallet Configuration	14 x 5 = 70	

Half Steam Foil Lid



Item Number/UPC	5001	047552350016
Pairs With	5112, 5116, 5122, 5132	
Top Out	345 x 280 mm	5 1/2 x 11 in
Top In	315 x 250 mm	12 1/2 x 9 3/4 in
Shipping Weight	2.5 kg	5.5 lb
Case Dimensions	295 x 355 x 200 mm	11 1/2 x 14 x 7 3/4 in
Pack Factor	100 / Case	
Pallet Configuration	11 x 9 = 99	

¼ Steam Foil Lid



Item Number/UPC	5003	047552515194
Pairs With	5012	
Top Out	260 x 160 mm	10 1/4 x 6 1/4 in
Shipping Weight	3.2 kg	7 lb
Case Dimensions	.	.
Pack Factor	250 / Case	
Pallet Configuration		

CATERWARE

LAZY SUSAN



12" Caterware Lazy Susan

Item Number/UPC	5412	047552500497
Pairs With	5312	
Top Out	310 mm	12 in
Vertical Depth	15 mm	9/16 in
Slant Depth	22 mm	7/8 in
Shipping Weight	1.6 kg	3.5 lb
Case Dimensions	315 x 315 x 125 mm	12 1/2 x 12 1/2 x 5 in
Pack Factor	25 / Case	
Pallet Configuration	24 x 5 = 120	



16" Caterware Lazy Susan

Item Number/UPC	5416	047552500527
Pairs With	5316	
Top Out	405 mm	16 in
Vertical Depth	15 mm	9/16 in
Slant Depth	22 mm	7/8 in
Shipping Weight	3.1 kg	6.7 lb
Case Dimensions	145 x 410 x 420 mm	5 3/4 x 16 1/4 x 16 1/2 in
Pack Factor	25 / Case	
Pallet Configuration	16 x 4 = 64	



18" Caterware Lazy Susan

Item Number/UPC	5418	047552500558
Pairs With	5318	
Top Out	460 mm	18 in
Vertical Depth	18 mm	11/16 in
Slant Depth	25 mm	1 in
Shipping Weight	4 kg	8.9 lb
Case Dimensions	460 x 460 x 125 mm	18 x 18 x 5 in
Pack Factor	25 / Case	
Pallet Configuration		

TRAY



12" Caterware Flat Tray

Item Number/UPC	5512	047552500510
Pairs With	5312	
Top Out	310 mm	12 in
Vertical Depth	15 mm	9/16 in
Slant Depth	22 mm	7/8 in
Shipping Weight	1.6 kg	3.5 lb
Case Dimensions	315 x 315 x 125 mm	12 1/2 x 12 1/2 x 5 in
Pack Factor	25 / Case	
Pallet Configuration	18 x 5 = 90	



16" Caterware Flat Tray

Item Number/UPC	5516	047552500541
Pairs With	5316	
Top Out	405 mm	16 in
Vertical Depth	15 mm	9/16 in
Slant Depth	22 mm	7/8 in
Shipping Weight	3.1 kg	6.7 lb
Case Dimensions	145 x 410 x 420 mm	5 3/4 x 16 1/4 x 16 1/2 in
Pack Factor	25 / Case	
Pallet Configuration	18 x 4 = 72	



18" Caterware Flat Tray

Item Number/UPC	5518	047552500572
Pairs With	5318	
Top Out	455 mm	18 in
Vertical Depth	18 mm	11/16 in
Slant Depth	25 mm	1 in
Shipping Weight	4 kg	8.9 lb
Case Dimensions	460 x 460 x 125 mm	18 x 18 x 5 in
Pack Factor	25 / Case	
Pallet Configuration		

DOME LID



12" Caterware Lid Dome

Item Number/UPC	5312	047552500503
Pairs With	5412, 5512	
Top Out	320 mm	12 5/8 in
Vertical Depth	65 mm	2 9/16 in
Slant Depth	69 mm	2 11/16 in
Shipping Weight	1.2 kg	2.7 lb
Case Dimensions	335 x 335 x 140 mm	13 1/4 x 13 1/4 x 5 1/2 in
Pack Factor	25 / Case	
Pallet Configuration	12 x 5 = 60	



16" Caterware Lid Dome

Item Number/UPC	5316	047552500534
Pairs With	5416, 5516	
Top Out	415 mm	16 1/4 in
Vertical Depth	78 mm	3 1/16 in
Slant Depth	80 mm	3 1/8 in
Shipping Weight	1.9 kg	4.3 lb
Case Dimensions	415 x 415 x 130 mm	16 1/4 x 16 1/4 x 5 in
Pack Factor	25 / Case	
Pallet Configuration	8 x 4 = 32	



18" Caterware Lid Dome

Item Number/UPC	5318	047552500565
Pairs With	5418, 5518	
Top Out	465 mm	18 3/8 in
Vertical Depth	83 mm	3 1/4 in
Slant Depth	85 mm	3 3/8 in
Shipping Weight	2.4 kg	5.4 lb
Case Dimensions	480 x 480 x 160 mm	19 x 19 x 6 1/4 in
Pack Factor	25 / Case	
Pallet Configuration	8 x 4 = 32	

BAKERY

MISCELLANEOUS BAKERY

4 oz Utility Cup



Item Number/UPC	5304B	047552595424
Rim Style	FC	
Top Out	82 mm	3 1/4 in
Top In	75 mm	2 15/16 in
Bottom	60 mm	2 3/8 in
Vertical Depth	39 mm	1 9/16 in
Slant Depth	40 mm	1 9/16 in
Capacity	110 mL	3.7 fl oz
Shipping Weight	4.5 kg	9.8 lb
Case Dimensions	42.5 x 65 x 18.2 mm	16 3/4 x 25 1/2 x 7 1/4 in
Pack Factor	1000 / case	
Pallet Configuration	4 x 10 = 40	

**Half Sheet Cake Pan
Aluminum**



Item Number/UPC	5650B	047552595332
Rim Style	FC	
Top Out	447 x 326 mm	17 5/8 x 12 13/16 in
Top In	430 x 310 mm	16 15/16 x 12 3/16 in
Bottom	420 x 297 mm	16 9/16 x 11 11/16 in
Vertical Depth	32 mm	1 1/4 in
Slant Depth	35 mm	1 3/8 in
Capacity	4000 mL	135.3 fl oz
Shipping Weight	8.1 kg	18.0 lb
Case Dimensions	46 x 50.5 x 34 mm	18 x 20 x 13 1/2 in
Pack Factor	100 / case	
Pallet Configuration	6 x 5 = 30	

PIE

2" Tart Pan



Item Number/UPC	5802	047552595318
Rim Style	FC	
Top Out	65 mm	2 9/16 in
Top In	60 mm	2 3/8 in
Bottom	40 mm	1 9/16 in
Vertical Depth	20 mm	13/16 in
Slant Depth	25 mm	1 in
Capacity	40 mL	1.4 fl oz
Shipping Weight	1.1 kg	2.3 lb
Case Dimensions	14 x 38.5 x 14.5 mm	5 1/2 x 15 1/4 x 5 3/4 in
Pack Factor	1000 / case	
Pallet Configuration	21 x 12 = 252	

3" Tart Pan



Item Number/UPC	5803	047552595417
Rim Style	FC	
Top Out	74.5 mm	2 15/16 in
Top In	65 mm	2 9/16 in
Bottom	38.5 mm	1 1/2 in
Vertical Depth	20 mm	13/16 in
Slant Depth	25 mm	1 in
Capacity	35 mL	1.2 fl oz
Shipping Weight	1.3 kg	2.9 lb
Case Dimensions	16 x 43 x 16.5 mm	6 1/4 x 17 x 6 1/2 in
Pack Factor	1000 / case	
Pallet Configuration	18 x 10 = 180	

4" Tart Pan



Item Number/UPC	5804	047552595325
Rim Style	FC	
Top Out	94 mm	3 11/16 in
Top In	85 mm	3 3/8 in
Bottom	54 mm	2 1/8 in
Vertical Depth	19 mm	3/4 in
Slant Depth	27 mm	1 1/6 in
Capacity	70 mL	2.4 fl oz
Shipping Weight	1.9 kg	4.2 lb
Case Dimensions	20 x 42 x 20.5 mm	7 3/4 x 16 1/2 x 8 in
Pack Factor	1000 / case	
Pallet Configuration	15 x 8 = 120	

10" Pie Plate Deep



Item Number/UPC	5810D	047552595295
Rim Style	FC	
Top Out	245 mm	9 5/8 in
Top In	220 mm	8 11/16 in
Bottom	178 mm	7 in

Vertical Depth	30 mm	1 3/16 in
Slant Depth	45 mm	1 3/4 in
Capacity	900 mL	30.4 fl oz
Shipping Weight	4.8 kg	10.6 lb
Case Dimensions	39 x 50 x 26 mm	15 1/4 x 19 3/4 x 10 1/4 in
Pack Factor	250 / case	
Pallet Configuration	6 x 7 = 42	

12" Pie Plate Perforated Deep



Item Number/UPC	5812PF	047552595301
Rim Style	FC	
Top Out	297 mm	11 11/16 in
Top In	278 mm	10 15/16 in
Bottom	228 mm	9 in
Vertical Depth	35 mm	1 3/8 in
Slant Depth	48 mm	1 7/8 in
Capacity	1600 mL	54.1 fl oz
Shipping Weight	9.3 kg	20.4 lb
Case Dimensions	31 x 60.5 x 37.5 mm	12 1/4 x 23 3/4 x 14 3/4 in
Pack Factor	250 / case	
Pallet Configuration	6 x 5 = 30	

5" Pot Pie Plate



Item Number/UPC	525B	047552515545
Rim Style	FC	
Top Out	125 mm	4 7/8 in
Top In	110 mm	4 3/8 in
Bottom	75 mm	3 in
Vertical Depth	31 mm	1 1/4 in
Slant Depth	35 mm	1 3/8 in
Capacity	200 ml	7.0 fl oz
Shipping Weight	10.5 kg	23.2 lb
Case Dimensions	300 x 645 x 515 mm	11 3/4 x 25 1/2 x 20 1/4 in
Pack Factor	2500 / Case	
Pallet Configuration	6 x 4 = 24	

8" Shallow Pie Plate



Item Number/UPC	5808S	047552518188
Rim Style	FC	
Top Out	200 mm	7 7/8 in
Top In	180 mm	7 1/8 in
Bottom	145 mm	5 3/4 in
Vertical Depth	21 mm	13/16 in
Slant Depth	25 mm	1 in
Capacity	400 ml	14.1 fl oz
Shipping Weight	6 kg	13.2 lb
Case Dimensions	420 x 510 x 215 mm	16 1/2 x 20 x 8 1/2 in
Pack Factor	500 / Case	
Pallet Configuration	10 x 4 = 40	

8" Pie Plate Smooth Bottom



Item Number/UPC	5808M	047552595493
Rim Style	FC	
Top Out	202 mm	7 15/16 in
Top In	176 mm	6 15/16 in
Bottom	145 mm	5 11/16 in
Vertical Depth	22 mm	7/8 in
Slant Depth	25 mm	1 in
Capacity	425 mL	15 fl oz
Shipping Weight	5.8 kg	12.8 lb
Case Dimensions	420 x 540 x 230 mm	16 1/2 x 21 1/4 x 9 in
Pack Factor	500 / Case	
Pallet Configuration	4 x 8 = 32	

9" Deep Pie Plate



Item Number/UPC	5809D	047552518218
Rim Style	FC	
Top Out	225 mm	8 7/8 in
Top In	205 mm	8 1/8 in
Bottom	165 mm	6 5/8 in
Vertical Depth	34 mm	1 5/16 in
Slant Depth	39 mm	1 9/16 in
Capacity	800 ml	28.2 fl oz
Shipping Weight	7.7 kg	17 lb
Case Dimensions	470 x 630 x 240 mm	18 1/2 x 24 3/4 x 9 1/2 in
Pack Factor	500 / Case	
Pallet Configuration	4 x 4 = 16	

9" Pie Plate Shallow



Item Number/UPC	5809S	047552594977
Rim Style	FC	
Top Out	227 mm	8 15/16 in
Top In	207 mm	8 1/8 in
Bottom	171 mm	6 3/4 in
Vertical Depth	26 mm	1.0 in
Slant Depth	30 mm	1 3/16 in
Capacity	640 mL	22.5 fl oz
Shipping Weight	7.5 kg	16.5 lb
Case Dimensions	355 x 465 x 465 mm	14 x 18 1/4 x 18 1/4 in
Pack Factor	500 / Case	
Pallet Configuration	6 x 4 = 24	

MISCELLANEOUS CONTAINERS

ROASTER

Oval Roaster



Item Number/UPC	5201	047552595486
Rim Style	FC	
Top Out	455 x 356 mm	17 15/16 x 14 in
Top In	405 x 320 mm	15 15/16 x 12 5/8 in
Bottom	355 x 275 mm	14 x 10 13/16 in
Vertical Depth	85 mm	3 3/8 in
Slant Depth	90 mm	3 9/16 in
Capacity	7200 mL	243.5 fl oz
Shipping Weight	2.5 kg	5.5 lb
Case Dimensions	23 x 46.5 x 37 mm	9 x 18 1/4 x 14 1/2 in
Pack Factor	25 / case	
Pallet Configuration	10 x 5 = 50	

PIZZA

13" Round Pizza Tray



Item Number/UPC	5213	047552518225
Rim Style	FC	
Top Out	330 mm	13 in
Top In	315 mm	12 3/8 in
Bottom	305 mm	12 in
Vertical Depth	23 mm	7/8 in
Slant Depth	25 mm	1 in
Shipping Weight	5.7 kg	12.5 lb
Case Dimensions	345 x 345 x 589 mm	13 1/2 x 13 1/2 x 23 1/4 in
Pack Factor	200 / Case	
Pallet Configuration	6 x 6 = 36	

SMOOTH WALL

22 oz Smooth Wall Combo



Item Number/UPC	2022S	047552595073
Top Out	154 x 206 mm	6 1/8 x 8 1/8 in
Top In	139 x 190 mm	5 1/2 x 7 1/2 in
Bottom	130 x 183 mm	5 1/8 x 7 1/4 in
Vertical Depth	30 mm	3/16 in
Capacity	650 mL	22 fl oz
Shipping Weight	4.3 kg	9.4 lb
Case Dimensions	340 x 340 x 230 mm	13 1/2 x 13 1/2 x 9 in
Pack Factor	100 combo / case	
Pallet Configuration	9 x 8 = 72	

47 oz Smooth Wall Combo



Item Number/UPC	2047S	047552595097
Top Out	194 x 247 mm	7 5/8 x 9 3/4 in
Top In	175 x 227 mm	6 7/8 x 8 7/8 in
Bottom	167 x 217 mm	6 5/8 x 8 1/2 in
Vertical Depth	40 mm	1 9/16 in
Capacity	1400 mL	47 fl oz
Shipping Weight	3.6 kg	8.0 lb
Case Dimensions	220 x 400 x 275 mm	8 3/4 x 15 3/4 x 10 3/4 in
Pack Factor	50 combo / case	
Pallet Configuration	12 x 6 = 72	

64 oz Smooth Wall Combo



Item Number/UPC	2064S	047552595110
Top Out	223 x 284 mm	8 3/4 x 11 1/8 in
Top In	205 x 265 mm	8 1/8 x 10 3/8 in
Bottom	195 x 225 mm	7 5/8 x 8 7/8 in
Vertical Depth	40 mm	1 9/16 in
Capacity	1900 mL	64 fl oz
Shipping Weight	4.4 kg	9.7 lb
Case Dimensions	260 x 340 x 310 mm	10 1/4 x 13 1/2 x 12 1/4 in
Pack Factor	50 combo / case	
Pallet Configuration	12 x 7 - 84	

FOIL CUTTERBOXES

ALL PURPOSE



**12/656 Foil All Purpose
SPARTAN**

Item Number/UPC	1220S	047552514333
Width	300 mm	12 in
Length	200 m	656 ft
Shipping Weight	2 kg	4.3 lb
Case Dimensions	90 x 350 x 90 mm	3 1/2 x 13 3/4 x 3 1/2 in
Pack Factor	1 / Each	
Pallet Configuration	54 x 6 = 324	



**18/328 Foil All Purpose
SPARTAN**

Item Number/UPC	1810S	047552514340
Width	450 mm	18 in
Length	100 m	328 ft
Shipping Weight	2 kg	4.3 lb
Case Dimensions	90 x 505 x 90 mm	3 1/2 x 20 x 3 1/2 in
Pack Factor	1 / Each	
Pallet Configuration	24 x 6 = 144	

HEAVY DUTY

18/328 Foil Heavy Duty

PRESTIGE



Item Number/UPC	1818P	047552332685
Width	450 mm	18 in
Length	100 m	328 ft
Shipping Weight	2.7 kg	5.9 lb
Case Dimensions	90 x 505 x 90 mm	3 1/2 x 20 x 3 1/2 in
Pack Factor	1 / Each	
Pallet Configuration	24 x 6 = 144	

30cm/200m Foil Heavy Duty

PRESTIGE



Item Number/UPC	1228P	047552332210
Width	300 mm	11.8 in
Length	200 m	656 ft
Shipping Weight	2.8 kg	6.1 lb
Case Dimensions	90 x 350 x 90 mm	3 1/2 x 13 3/4 x 3 1/2 in
Pack Factor	1 / Each	
Pallet Configuration	54 x 6 = 324	

45cm/300m Foil Heavy Duty

WP



Item Number/UPC	1838	17.7 in
Width	450 mm	985 ft
Length	300 m	16.9 lb
Shipping Weight	7.7 kg	5 1/4 x 19 3/4 x 5 1/4 in
Case Dimensions	135 x 500 x 135 mm	
Pack Factor	1 / Each	
Pallet Configuration	16 x 7 = 112	

STANDARD

12/656 Foil Standard PRESTIGE



Item Number/UPC	1220P	047552332265
Width	300 mm	12 in
Length	200 m	656 ft
Shipping Weight	2.2 kg	4.9 lb
Case Dimensions	90 x 350 x 90 mm	3 1/2 x 13 3/4 x 3 1/2 in
Pack Factor	1 / Each	
Pallet Configuration	54 x 6 = 324	

18/328 Foil Standard PRESTIGE



Item Number/UPC	1810P	047552332678
Width	450 mm	18 in
Length	100 m	328 ft
Shipping Weight	2.2 kg	4.8 lb
Case Dimensions	90 x 505 x 90 mm	3 1/2 x 20 x 3 1/2 in
Pack Factor	1 / Each	
Pallet Configuration	24 x 6 = 144	

45cm/300m Foil Standard WP



Item Number/UPC	1830	17.7 in
Width	450 mm	985 ft
Length	300 m	13.4 lb
Shipping Weight	6.1 kg	5 1/4 x 19 3/4 x 5 1/4 in
Case Dimensions	135 x 500 x 135 mm	
Pack Factor	1 / Each	
Pallet Configuration	16 x 7 = 112	

SLIDE CUT / NO BLADE



**18/328 Foil Standard PRESTIGE
- No Blade**

Item Number/UPC	1810PNB	047552595196
Width	450 mm	18 in
Length	100 m	328 ft
Shipping Weight	2.1 kg	4.7 lb
Case Dimensions	90 x 480 x 90 mm	3 1/2 x 19 x 3 1/2 in
Pack Factor	1 / Each	
Pallet Configuration	24 x 6 = 144	

FOIL SHEETS

INSULATED FOIL SHEETS

12x12 Insulated Foil Sheet



Item Number/UPC	1212	047552594991
Width	300 mm	12 in
Length	305 mm	12 in
Shipping Weight	4.4 kg	9.6 lb
Case Dimensions	320 x 340 x 90 mm	12 1/2 x 13 1/2 x 3 1/2 in
Pack Factor	1000 Sheets / Case	
Pallet Configuration	12 x 9 = 108	

12x14 Insulated Foil Sheet



Item Number/UPC	1214	047552595004
Width	300 mm	12 in
Length	355 mm	14 in
Shipping Weight	5.1 kg	11.2 lb
Case Dimensions	320 x 390 x 90 mm	12 1/2 x 15 1/4 x 3 1/2 in
Pack Factor	1000 Sheets / Case	
Pallet Configuration	12 x 9 = 108	

14x14 Insulated Foil Sheet



Item Number/UPC	1414	047552595011
Width	355 mm	14 in
Length	355 mm	14 in
Shipping Weight	6.2 kg	13.8 lb
Case Dimensions	380 x 390 x 90 mm	15 x 15 1/4 x 3 1/2 in
Pack Factor	1000 Sheets / Case	
Pallet Configuration	12 x 9 = 108	

14x14 Insulated Foil Sheet - Your Logo Here



Item Number/UPC	1414PL	14 in
Width	355 mm	14 in
Length	355 mm	13.8 lb
Shipping Weight	6,2 kg	15 x 15 1/4 x 3 1/2 in
Case Dimensions	380 x 390 x 90 mm	
Pack Factor	1000 Sheets / Case	
Pallet Configuration	12 x 9 = 108	

POP-UP SHEETS

12x10.75 Silver Foil Sheet



Item Number/UPC	634	047552336348
Width	275 mm	10.75 in
Length	305 mm	12 in
Shipping Weight	9 kg	19.9 lb
Case Dimensions	320 x 450 x 200 mm	12 1/2 x 17 3/4 x 7 3/4 in
Pack Factor	6 x 500 Sheets / Case	
Pallet Configuration	10 x 8 = 80	

12x10.75 Silver Foil Sheet



Item Number/UPC	633	047552337338
Width	275 mm	10.75 in
Length	305 mm	12 in
Shipping Weight	7.9 kg	17.4 lb
Case Dimensions	330 x 470 x 230 mm	13 x 18 1/2 x 9 in
Pack Factor	12 x 200 Sheets / Case	
Pallet Configuration	10 x 8 = 80	

8x10.75 Silver Foil Sheet



Item Number/UPC	628	047552816423
Width	275 mm	10.75 in
Length	205 mm	8 in
Shipping Weight	6 kg	14.4 lb
Case Dimensions	235 x 470 x 205 mm	9 1/4 x 18 1/2 x 8 in
Pack Factor	6 x 500 Sheets / Case	
Pallet Configuration	10 x 8 = 80	

9x10.75 Blue Stripe Foil Sheet



Item Number/UPC	642	047552337420
Width	275 mm	10.75 in
Length	230 mm	9 in
Shipping Weight	7.1 kg	15.8 lb
Case Dimensions	260 x 460 x 190 mm	10 1/4 x 18 x 7 1/2 in
Pack Factor	6 x 500 Sheets / Case	
Pallet Configuration	10 x 8 = 80	

9x10.75 Gold Foil Sheet



Item Number/UPC	630G	047552337307
Width	275 mm	10.75 in
Length	230 mm	9 in
Shipping Weight	5.7 kg	12.7 lb
Case Dimensions	250 x 460 x 90 mm	9 3/4 x 18 x 3 1/2 in

Pack Factor	12 x 200 Sheets / Case	
Pallet Configuration	10 x 8 = 80	

9x10.75 Green Stripe Foil Sheet



Item Number/UPC	636	047552337369
Width	275 mm	10.75 in
Length	230 mm	9 in
Shipping Weight	7.1 kg	15.8 lb
Case Dimensions	260 x 460 x 190 mm	10 1/4 x 18 x 7 1/2 in
Pack Factor	6 x 500 Sheets / Case	
Pallet Configuration	10 x 8 = 80	

9x10.75 Red Stripe Foil Sheet



Item Number/UPC	637	047552337376
Width	275 mm	10.75 in
Length	230 mm	9 in
Shipping Weight	7.1 kg	15.8 lb
Case Dimensions	260 x 460 x 190 mm	10 1/4 x 18 x 7 1/2 in
Pack Factor	6 x 500 Sheets / Case	
Pallet Configuration	10 x 8 = 80	

9x10.75 Silver Foil Sheet



Item Number/UPC	632	047552337321
Width	275 mm	10.75 in
Length	230 mm	9 in
Shipping Weight	6.8 kg	15.1 lb
Case Dimensions	260 x 460 x 190 mm	10 1/4 x 18 x 7 1/2 in
Pack Factor	6 x 500 Sheets / Case	
Pallet Configuration	10 x 8 = 80	

9x10.75 Silver Foil Sheet



Item Number/UPC	631	047552337314
Width	275 mm	10.75 in
Length	230 mm	9 in
Shipping Weight	5.7 kg	12.7 lb
Case Dimensions	250 x 460 x 90 mm	9 3/4 x 18 x 3 1/2 in
Pack Factor	12 x 200 Sheets / Case	
Pallet Configuration	10 x 8 = 80	

PVC FILM

WP PVC CUTTERBOXES

CUTTERBOXES WITH BLADE



**11/2500 PVC Film Cutterbox
WP**

Item Number/UPC	1125	047552502767
Width	279 mm	11 in
Length	762 m	2500 ft
Shipping Weight	3.1 kg	6.8 lb
Case Dimensions	150 x 370 x 140 mm	6 x 14 1/2 x 5 1/2 in
Pack Factor	1 / Case	
Pallet Configuration	56 x 3 = 168	



**12/2000 PVC Film Cutterbox
WP**

Item Number/UPC	122	047552331220
Width	305 mm	12 in
Length	609.6 m	2000 ft
Shipping Weight	2.3 kg	5.1 lb
Case Dimensions	130 x 350 x 135 mm	5 x 13 3/4 x 5 1/4 in
Pack Factor	1 / Case	
Pallet Configuration	56 x 3 = 168	



**12/2000 PVC Film Cutterbox
WP**

Item Number/UPC	121	047552331213
Width	305 mm	12 in
Length	305 m	1000 ft
Shipping Weight	1.2 kg	2.7 lb
Case Dimensions	80 x 360 x 80 mm	3 1/4 x 14 1/4 x 3 1/4 in
Pack Factor	1 / Case	
Pallet Configuration	28 x 6 = 168	



**17/2500 PVC Film Cutterbox
WP**

Item Number/UPC	1725	047552511400
Width	430 mm	17 in
Length	762 m	2500 ft
Shipping Weight	4 kg	8.9 lb
Case Dimensions	130 x 500 x 130 mm	5 x 19 3/4 x 5 in
Pack Factor	1 / Case	
Pallet Configuration	56 x 2 = 112	



**18/2000 PVC Film Cutterbox
WP**

Item Number/UPC	182	047552331824
Width	457 mm	18 in
Length	609.6 m	2000 ft
Shipping Weight	3.4 kg	7.6 lb
Case Dimensions	130 x 550 x 135 mm	5 x 21 3/4 x 5 1/4 in
Pack Factor	1 / Case	
Pallet Configuration	56 x 2 = 112	



**24/2000 PVC Film Cutterbox
WP**

Item Number/UPC	142	047552331428
Width	610 mm	24 in
Length	609.6 m	2000 ft
Shipping Weight	5.1 kg	11.3 lb
Case Dimensions	150 x 655 x 140 mm	6 x 25 3/4 x 5 1/2 in
Pack Factor	1 / Case	
Pallet Configuration	56 x 1 = 56	

SLIDE CUT / NO BLADE



Item Number/UPC	1125Z	047552502774
Width	280 mm	11 in
Length	762 m	2500 ft
Shipping Weight	3.1 kg	6.8 lb
Case Dimensions	150 x 370 x 140 mm	6 x 14 1/2 x 5 1/2 in
Pallet Configuration	56 x 3 = 168	



17/2500 PVC Film Cutterbox WP

Item Number/UPC	1725NB	047552331749
Width	430 mm	17 in
Length	762 m	2500 ft
Shipping Weight	4.4 kg	9.8 lb
Case Dimensions	150 x 515 x 145 mm	6 x 20 1/4 x 5 3/4 in
Pack Factor	1 / Case	
Pallet Configuration	56 x 2 = 112	



17/2500 PVC Film Cutterbox WP

Item Number/UPC	1725Z	047552331701
Width	430 mm	17 in
Length	762 m	2500 ft
Shipping Weight	4.4 kg	9.8 lb
Case Dimensions	150 x 515 x 145 mm	6 x 20 1/4 x 5 3/4 in
Pack Factor	1 / Case	
Pallet Configuration	56 x 2 = 112	



18/2000 PVC Film Cutterbox WP - Slide Cut

Item Number/UPC	182Z	047552330827
Width	457 mm	18 in
Length	609.6 m	2000 ft
Shipping Weight	3.3 kg	7.3 lb
Case Dimensions	150 x 500 x 140 mm	6 x 19 3/4 x 5 1/2 in
Pack Factor	1 / Case	
Pallet Configuration	56 x 2 = 112	

PVC REFILL ROLLS



11/2000 PVC Refill Rolls

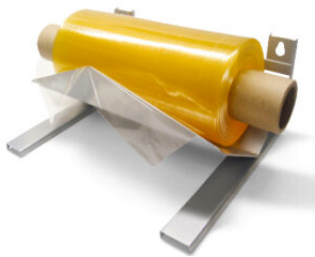
Item Number/UPC	1120R	047552595134
Width	279 mm	11 in
Length	609.6 m	2000 ft
Shipping Weight	7.4 kg	16.3 lb
Case Dimensions	330 x 390 x 140 mm	13 x 15 1/4 x 5 1/2 in
Pack Factor	3 / Case	
Pallet Configuration	19 x 4 = 76	



17/2000 PVC Refill Rolls

Item Number/UPC	1720R	047552595141
Width	430 mm	17 in
Length	609.6 m	2000 ft
Shipping Weight	10.5 kg	23.1 lb
Case Dimensions	380 x 480 x 130 mm	15 x 19 x 5 in
Pack Factor	3 / Case	
Pallet Configuration	19 x 3 = 57	

EASY TEAR PVC



1 Tier Perforated Film Dispenser

Item Number/UPC	423	
Pairs With	301, 305, 309	1.5 lb
Shipping Weight	0.68 kg	9.3 x 10 x 4.5 in
Case Dimensions	235 x 255 x 115 mm	
Pack Factor	1 / case	
Pallet Configuration		



11x11 Perforated All Purpose Cling 1700/roll

Item Number/UPC	309	047552333095
Width	279 mm	11 in
Length	280 mm	11 in
Shipping Weight	1.8 kg	4 lb
Case Dimensions	130 x 340 x 130 mm	5 x 13 1/2 x 5 in
Pack Factor	1 / Case	
Pallet Configuration	24 x 5 = 120	



12x12 Perforated All Purpose Cling 1600/roll

Item Number/UPC	311	047552333101
Width	305 mm	12 in
Length	305 mm	12 in
Shipping Weight	2 kg	4.4 lb
Case Dimensions	130 x 340 x 130 mm	5 x 13 1/2 x 5 in
Pack Factor	1 / Case	
Pallet Configuration	24 x 6 = 144	



14x14 Perforated All Purpose Cling 1200/roll

Item Number/UPC	313	047552333132
Width	355 mm	14 in
Length	355 mm	14 in
Shipping Weight	2.1 kg	4.6 lb
Case Dimensions	110 x 480 x 130 mm	4 1/4 x 19 x 5 in
Pack Factor	1 / Case	
Pallet Configuration	20 x 5 = 100	



6x5 Perforated All Purpose Cling 3000/roll

Item Number/UPC	301	047552333013
Width	155 mm	6 in
Length	127 mm	5 in
Shipping Weight	0.8 kg	1.9 lb
Case Dimensions	130 x 210 x 130 mm	5 x 8 1/4 x 5 in

Pack Factor	1 / Case	
Pallet Configuration	30 x 4 = 120	



**9x9 Perforated All Purpose
Cling 2200/roll**

Item Number/UPC	305	047552333057
Width	230 mm	9 in
Length	230 mm	9 in
Shipping Weight	1.5 kg	3.4 lb
Case Dimensions	130 x 340 x 130 mm	5 x 13 1/2 x 5 in
Pack Factor	1 / Case	
Pallet Configuration	24 x 5 = 120	

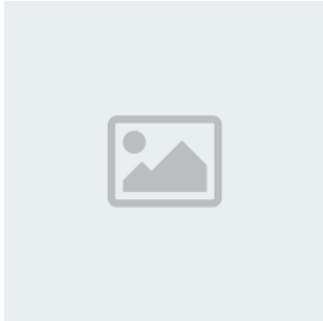
MEAT FILM

HAND FILM



14.5/55/5000 Meat Film

Item Number/UPC	MWL1450	047552501456
Width	370 mm	14.5 in
Length	1524 m	5000 ft
Shipping Weight	10.6 kg	22.3 lb
Case Dimensions	205 x 250 x 410 mm	8 x 9 3/4 x 16 1/4 in
Pack Factor	1 / Case	
Pallet Configuration	30 x 2 = 60	



11/55/1000 Meat Film

1.5IDCore

Item Number/UPC	MWL1110NC	047552595158
Width	280 mm	11 in
Length	305 m	1000 ft
Shipping Weight	3.4 kg	7.5 lb
Pack Factor	1 / Case	
Pallet Configuration	40 x 3 = 120	



17/55/5000 Meat Film

Item Number/UPC	MWL17	047552568121
Width	430 mm	17 in
Length	1524 m	5000 ft
Shipping Weight	12.3 kg	27.2 lb
Case Dimensions	195 x 195 x 450 mm	7 3/4 x 7 3/4 x 17 3/4 in
Pack Factor	1 / Case	
Pallet Configuration	30 x 2 = 60	

MACHINE FILM



14.5/60/5000 Meat Film

Item Number/UPC	MW145	047552595219
Width	370 mm	14.5 in
Length	1524 m	5000 ft
Shipping Weight	11.5 kg	25.3 lb
Case Dimensions	205 x 250 x 410 mm	8 x 9 3/4 x 16 1/4 in
Pack Factor	1 / Case	
Pallet Configuration	30 x 2 = 60	



11/60/5000 Meat Film

Item Number/UPC	MW11	047552500602
Width	280 mm	11 in
Length	1524 m	5000 ft
Shipping Weight	8.8 kg	19.3 lb
Pack Factor	1 / Case	
Pallet Configuration	30 x 2 = 60	



15.75/5000 Meat Film DG

Item Number/UPC	MW1575DG	047552536816
Width	400 mm	15.75 in
Length	1524 m	5000 ft
Shipping Weight	12.4 kg	27.3 lb
Case Dimensions	205 x 250 x 435 mm	8 x 9 3/4 x 17 1/4 in
Pack Factor	1 / Case	
Pallet Configuration	30 x 2 = 60	



17/60/5000 Meat Film

Item Number/UPC	MW17	047552500022
Width	430 mm	17 in
Length	1524 m	5000 ft
Shipping Weight	13.4 kg	29.5 lb
Case Dimensions	230 x 450 x 230 mm	9 x 17 3/4 x 9 in
Pack Factor	1 / Case	
Pallet Configuration	30 x 2 = 60	



18/60/5000 Meat Film

Item Number/UPC	MW18	047552339080
Width	455 mm	18 in
Length	1524 m	5000 ft
Shipping Weight	14.1 kg	31.2 lb
Case Dimensions	210 x 210 x 490 mm	8 1/4 x 8 1/4 x 19 1/4 in
Pack Factor	1 / Case	
Pallet Configuration	30 x 2 = 60	

MACHINE FILM HD



15/65/5000 Meat Film

Item Number/UPC	MWM15	047552516979
Width	380 mm	15 in
Length	1524 m	5000 ft
Shipping Weight	12.7 kg	28.0 lb
Pack Factor	1 / Case	
Pallet Configuration	20 x 3 = 60	



18/70/4000 Meat Film

Item Number/UPC	MWH18	047552501012
Width	455 mm	18 in
Length	1220 m	4000 ft
Shipping Weight	13.3 kg	29.3 lb
Pack Factor	1 / Case	
Pallet Configuration	30 x 2 = 60	

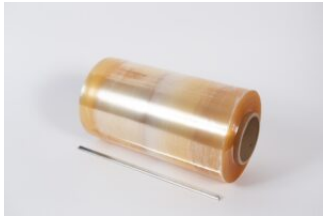
PRODUCE FILM

18/3900 Produce Film

Item Number/UPC	PW1839F	047552595202
Width	455 mm	18 in
Length	1188.7 m	3900 ft
Shipping Weight	10.7 kg	23.6 lb
Case Dimensions	190 x 195 x 490 mm	7 1/2 x 7 3/4 x 19 1/4 in
Pack Factor	1 / Case	
Pallet Configuration	30 x 2 = 60	



PROCESSOR FILM



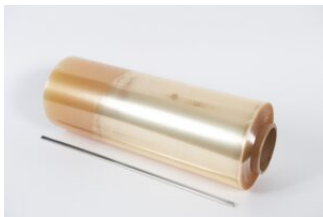
12/5280 Mill Roll Film

Item Number/UPC	401	047552334016
Pairs With	412	
Width	305 mm	12 in
Length	1609.3 m	5280 ft
Shipping Weight	6.0 kg	13.3 lb
Case Dimensions	170 x 170 x 340 mm	6 3/4 x 6 3/4 x 13 1/2 in
Pack Factor	1 / Case	
Pallet Configuration	30 x 2 = 60	



12" Mill Roll Dispenser

Item Number/UPC	412	
Pairs With	401	12 in
Width	305 mm	5280 ft
Length	1609.3 m	4.85 lb
Shipping Weight	2.2 kg	225 x 430 x 180 mm
Case Dimensions	8.9 x 16.9 x 7.1 in	
Pack Factor	1 / Case	
Pallet Configuration		



18/5280 Mill Roll Film

Item Number/UPC	403	047552334030
Width	455 mm	18 in
Length	1609.3 m	5280 ft
Shipping Weight	9.1 kg	20 lb
Case Dimensions	170 x 170 x 490 mm	6 3/4 x 6 3/4 x 19 1/4 in
Pack Factor	1 / Case	
Pallet Configuration	30 x 2 = 60	



24/5280 Mill Roll Film

Item Number/UPC	404	047552334047
Width	610 mm	24 in
Length	1609.3 m	5280 ft
Shipping Weight	12.5 kg	27.7 lb
Case Dimensions	170 x 170 x 640 mm	6 3/4 x 6 3/4 x 25 1/4 in
Pack Factor	1 / Case	
Pallet Configuration	30 x 1 = 30	

MUSHROOM FILM



14" Mushroom Film

Item Number/UPC	MSH14	047552595042
Width	355 mm	14 in
Length	1830 m	6000 ft
Shipping Weight	13.6 kg	30 lb
Case Dimensions	220 x 220 x 380 mm	8.8 x 8.8 x 15 in
Pack Factor	1 / case	
Pallet Configuration	20 x 2 = 40	



15" Mushroom Film

Item Number/UPC	MSH15	047552595059
Width	381 mm	15 in
Length	1830 m	6000 ft
Shipping Weight	14.6 kg	32.2 lb
Case Dimensions	220 x 220 x 400 mm	8.8 x 8.8 x 15 3/4 in
Pack Factor	1 / case	
Pallet Configuration	20 x 2 = 40	



18" Mushroom Film

Item Number/UPC	MSH18	047552595066
Width	457 mm	18 in
Length	1830 m	6000 ft
Shipping Weight	17.5 kg	28.6 lb
Case Dimensions	220 x 220 x 480 mm	8.8 x 8.8 x 19 in
Pack Factor	1 / case	
Pallet Configuration	20 x 2 = 40	

WRAPMASTER

WRAPMASTER DISPENSER



11/12" Dispenser
WRAPMASTER

Item Number/UPC	179D	047552339578
Pairs With	826, 175	
Width	279 mm	11 in
Shipping Weight	1.6 kg	3.6 lb
Case Dimensions	155 x 390 x 155 mm	6 x 15 1/4 x 6 in
Pack Factor	1 / Each	
Pallet Configuration	48 x 3 = 144	



17/18" Dispenser
WRAPMASTER

Item Number/UPC	180D	047552339585
Pairs With	883, 883HD, 805	
Width	430 mm	17 in
Shipping Weight	2 kg	4.5 lb
Case Dimensions	155 x 540 x 135 mm	6 x 21 1/4 x 5 1/4 in
Pack Factor	1 / Each	
Pallet Configuration	48 x 3 = 144	

WRAPMASTER FOIL REFILL ROLLS

12/600 Foil Refill WRAPMASTER



Item Number/UPC	826	047552338267
Pairs With	179D	
Width	305 mm	12 in
Length	182.88 m	600 ft
Shipping Weight	4.3 kg	9.5 lb
Case Dimensions	170 x 370 x 100 mm	6 3/4 x 14 1/2 x 4 in
Pack Factor	2 / Case	
Pallet Configuration	18 x 11 = 198	

18/300 Foil Refill Heavy Duty WRAPMASTER



Item Number/UPC	883HD	047552338304
Pairs With	180D	
Width	455 mm	18 in
Length	91.5 m	300 ft
Shipping Weight	5.1 kg	11.2 lb
Case Dimensions	175 x 520 x 100 mm	7 x 20 1/2 x 4 in
Pack Factor	2 / Case	
Pallet Configuration	12 x 11 = 132	

18/300 Foil Refill WRAPMASTER



Item Number/UPC	883	047552338298
Pairs With	180D	
Width	455 mm	18 in
Length	91.5 m	300 ft
Shipping Weight	4.2 kg	9.2 lb
Case Dimensions	170 x 520 x 100 mm	6 3/4 x 20 1/2 x 4 in
Pack Factor	2 / Case	
Pallet Configuration	12 x 11 = 132	

WRAPMASTER PVC REFILL ROLLS



**11/2000 PVC Refill
WRAPMASTER**

Item Number/UPC	175	047552595165
Pairs With	179D	
Width	279 mm	11 in
Length	609.6 m	2000 ft
Shipping Weight	4.3 kg	9.5 lb
Case Dimensions	230 x 360 x 120 mm	9 x 14 1/4 x 4 3/4 in
Pack Factor	2 / Case	
Pallet Configuration	40 x 3 = 120	



**17/2000 PVC Refill
WRAPMASTER**

Item Number/UPC	805	047552595189
Pairs With	180D	
Width	430 mm	17 in
Length	609.6 m	2000 ft
Shipping Weight	6.5 kg	14.3 lb
Case Dimensions	230 x 510 x 120 mm	9 x 20 x 4 3/4 in
Pack Factor	2 / Case	
Pallet Configuration	40 x 2 = 80	

WP Innova™